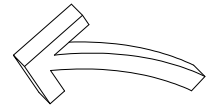


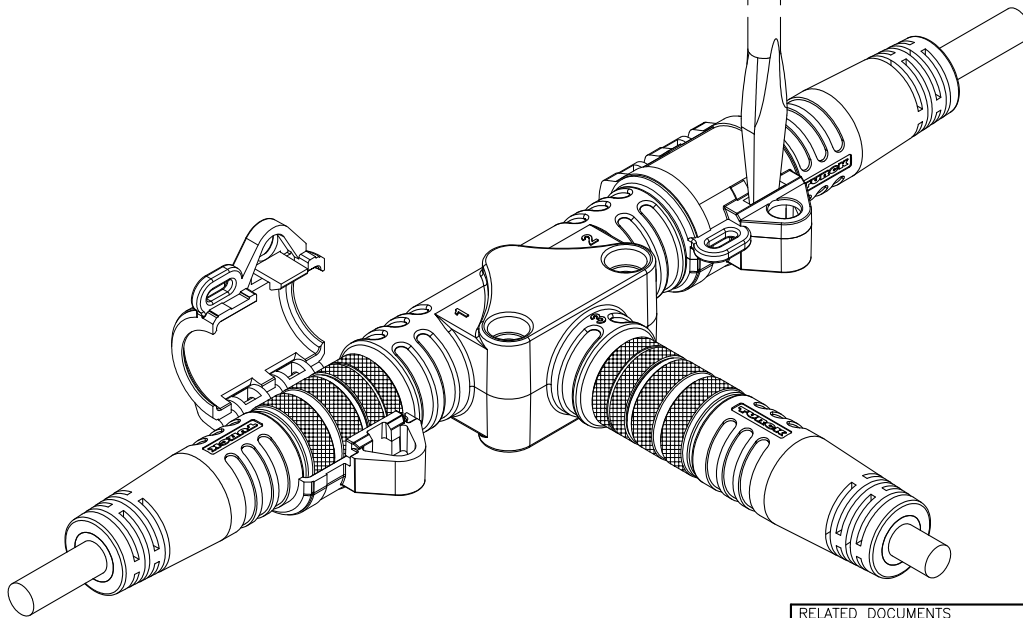
SPECIFICATIONS

HOUSING MATERIAL/COLOR

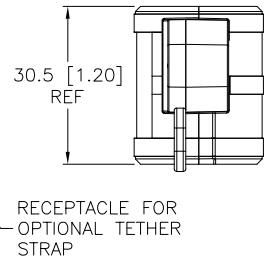
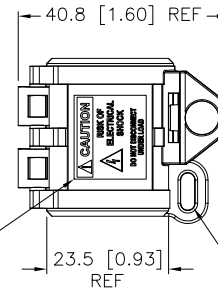
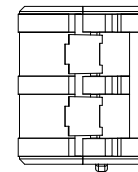
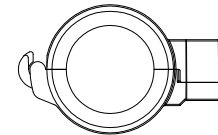
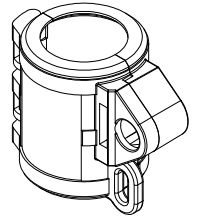
NYLON 66/ YELLOW



TO REMOVE POWER LOCK DEVICE, INSERT SMALL SCREWDRIVER INTO LOCKING GROOVE AS SHOWN IN PICTURE. ROTATE SCREWDRIVER IN DIRECTION SHOWN UNTIL LOCKING DEVICE RELEASES.



NOTE:
TO INSTALL POWER LOCK DEVICE PLACE THE POWER LOCK HOUSING ON THE COUPLING NUTS AS SHOWN. FINALLY, CLOSE THE POWER LOCK ASSEMBLY UNTIL IT SNAPS CLOSED.



SOURCE DRAWING - FOR REFERENCE ONLY

| | | | | | | | | | | | |
|----------------------|--|--|--|---|--|---|-----|--|--------------------|--------------|--------------|
| RELATED DOCUMENTS | | | | 3RD ANGLE PROJECTION | | THIS DRAWING IS PROPERTY OF TURCK INC. USE OF THIS DOCUMENT WITHOUT WRITTEN PERMISSION IS PROHIBITED. | | TURCK INC High Technology Sensors and Automation Controls 3000 CAMPUS DRIVE MINNEAPOLIS, MN 55441 1-800-544-7769 (763) 553-7300 (763) 553-0708 fax turck.com | | | |
| 1. 2. 3. 4. | | | | | | DRFT | RWC | DATE | 12/02/08 | DESCRIPTION | LOCK-M16-TEE |
| MATERIAL | | | | ALL DIMENSIONS DISPLAYED ON THIS DRAWING ARE FOR REFERENCE ONLY | | DSGN | | SCALE | 1=1.5 | | |
| SEE SPECIFICATIONS | | | | CONTACT TURCK FOR MORE INFORMATION | | UNIT OF MEASUREMENT | | | IDENTIFICATION NO. | REV | |
| FINISH | | | | | | MILLIMETER [INCH] | | | A9508 | A | |
| SEE SPECIFICATIONS | | | | | | DO NOT SCALE THIS DRAWING | | | FILE: A9508 | SHEET 1 OF 1 | |

| | | | | |
|-----|-----------------|----|----------|---------|
| A | DRAWING RELEASE | TR | 03/18/09 | |
| REV | DESCRIPTION | BY | DATE | ECO NO. |